

 **YACHTZOO**  
A BREED APART

YN202



**PRICE:** EUR 17 000 000  
**DELIVERY:** *May 2023*



YACHTZOO

A BREED APART



## SEMI-CUSTOM

### *Benefits:*

- Unique to you
- Higher resale value
- Lower cost to owner
- Shorter delivery time
- Built on a proven platform
- Extensive research and development
- Customised with your personal touch
- Continuous improvement of each evolution





# Highlights



Generous fixed swim platform

Tender storage for up to 7.5m (longitudinal) and 5m (transverse)

Generous sun deck

Optional jacuzzi

Bar & grill with bar seating

Panoramic views from the Captain's lounge

Sun beds

Full beam master stateroom with panoramic views

Open air seating

Outdoor dining

Two VIP staterooms

Floor to ceiling windows

Two twin guest cabins

Spacious crew quarters

Elegant stainless steel, round detailing



## *Living and Dining*

Your private home and safe haven on the water, YN202 provides a multitude of indoor and outdoor spaces to gather with company, ensuring your time onboard this timeless superyacht, is nothing short of extraordinary.

The interior styling of the main salon and dining features an 'inclusive' layout, designed to bring people together, making her perfecting for quiet evenings on the lounge or entertaining friends with an evening of canapés and aperitifs.

Make your way to the open air sun deck to enjoy the bar and grill and semi covered lounge seating. Extend the awning for a more shaded experience and enjoy the warm breeze as you watch the sunset with loved ones.

The spacious sun deck of YN202 allows you the choice of which amenities you will customise your yacht with. Allow it to remain an open space with loose furniture, or perhaps add the option of a jacuzzi as an added touch.







# Al Fresco Entertaining

Day beds on bridge deck fore enjoy magnificent views as you cruise to your next destination or drop anchor close to shore. Follow the teak stairs down to casual seating on the main deck, overlooking the bow - an idyllic spot for your morning coffee or evening champagne.

YN202 was made to be enjoyed. She's a gentleman's yacht, full of character and begs to be enjoyed in the most elegant of ways.

*"A superyacht gives you the complete freedom to travel the world; being able to enjoy the very best of what nature has to offer with your friends and family."*

- Owners of M/Y BRIGADOON  
(36m Martinique)









# Accommodation

Your generous full-beam master stateroom located on the main deck features a private entry hall adorned with ample wardrobe space and panoramic views overlooking the foredeck.

As the room opens up, you're greeted with a beautiful private sitting area, desk and en-suite, surrounding your king size master bed.

The guest accommodation of YN202 enjoys a private landing on the lower deck, that can be accessed via the main stairway.

Two VIP staterooms and two twin guest cabins each feature their own en-suite and ample storage for your guest's comfort. The twin cabins feature sliding beds creating the possibility to convert to king sized beds in each twin cabin, once connected.





# Interior Design



*\*impressions subject to change*



# *Designed with you in mind*

The styling of the T10 is a classic Moonen but modernised and continues their tradition of producing quality timeless boats. The brief, alongside T10's vintage 1980's layouts, inspired Studio Indigo to create a boat that was contemporary but with a subtle nod to its heritage. The 'gentleman's boat' layout is open and spacious with clean fluid lines that guide you around the boat highlighted by curved organic forms that envelop and cosset, creating a relaxing and comforting interior.

The staircase is the heart of not only the vessel but of the design as well. We created a modern sweeping spiral staircase with an almost sculptural feel using fluted natural timbers. Strong and consistent use of materials and detail gives continuity to the boat creating an illusion of greater volume, with a real effort made to use ethical and conscious materials to suit the needs of a modern owner.

The layout consists of 2 VIP double cabins, 2 twins and a master. The twin cabins were optimised to allow the twin beds to be converted into doubles, allowing 10 to sleep comfortably on board. A large main deck salon has floor to ceiling glazing increasing further still the sense of space and light seen throughout the boat. Lastly, the Bridge deck has a large spacious entertaining area for all the family.

Studio Indigo has aimed to create a home on sea that is understatedly luxurious whilst also giving those onboard the freedom to express themselves. The Moonen T10 is new and fresh, a chic Parisian-style pied-a-terre floating on water where owners can entertain their family and friends whilst cruising the oceans.

- Studio Indigo









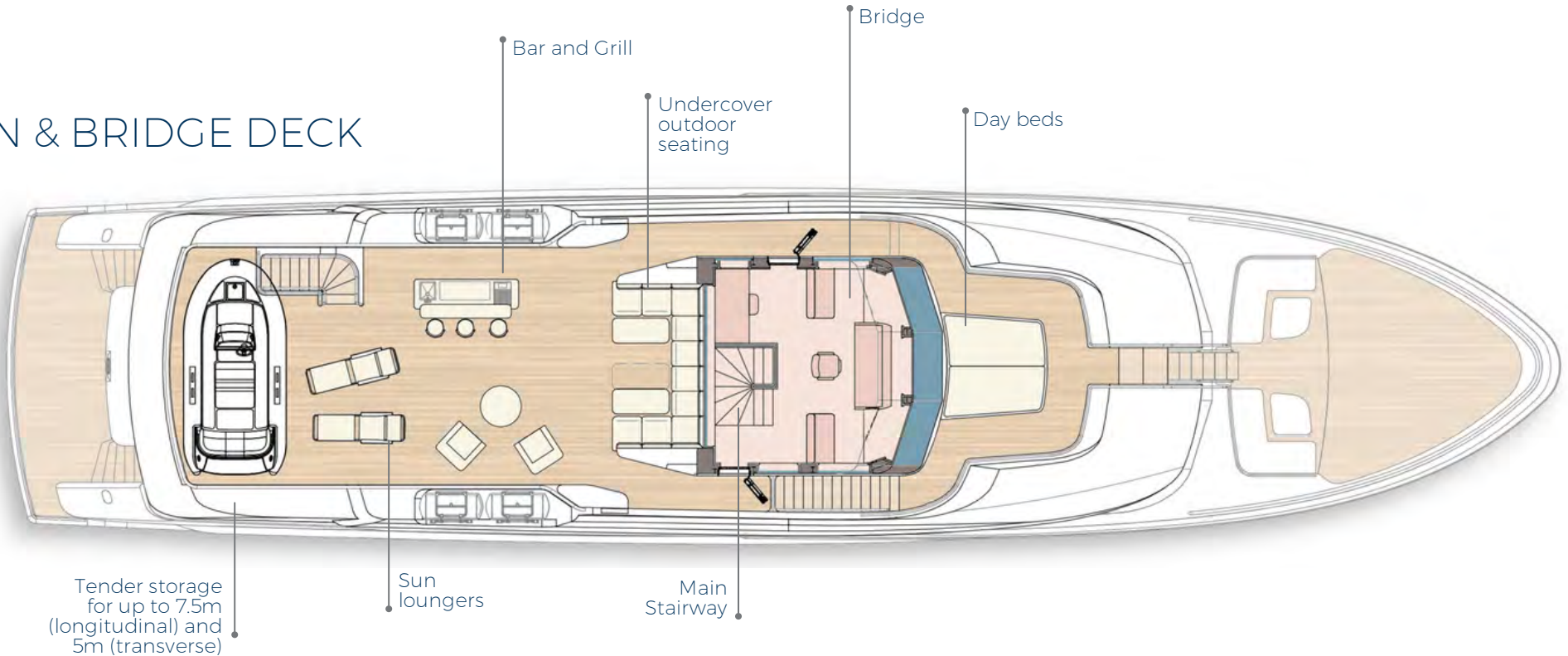


*Three decks, one dream..*  
GENERAL ARRANGEMENT

# PROFILE

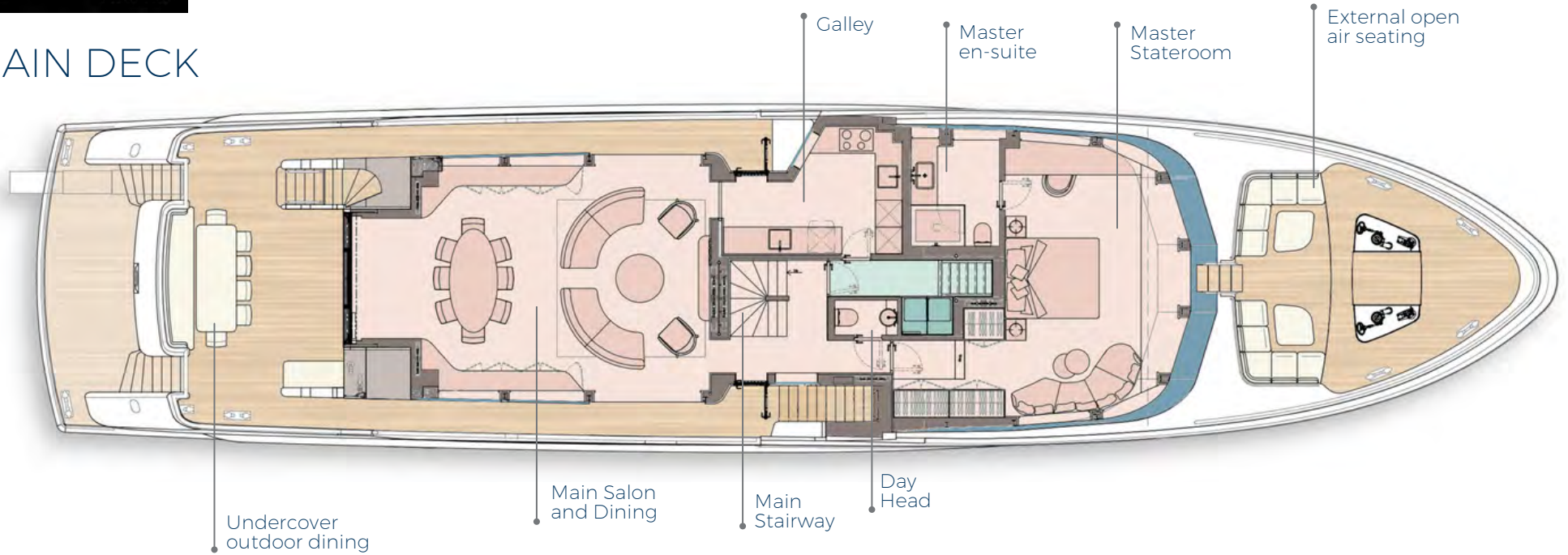


# SUN & BRIDGE DECK

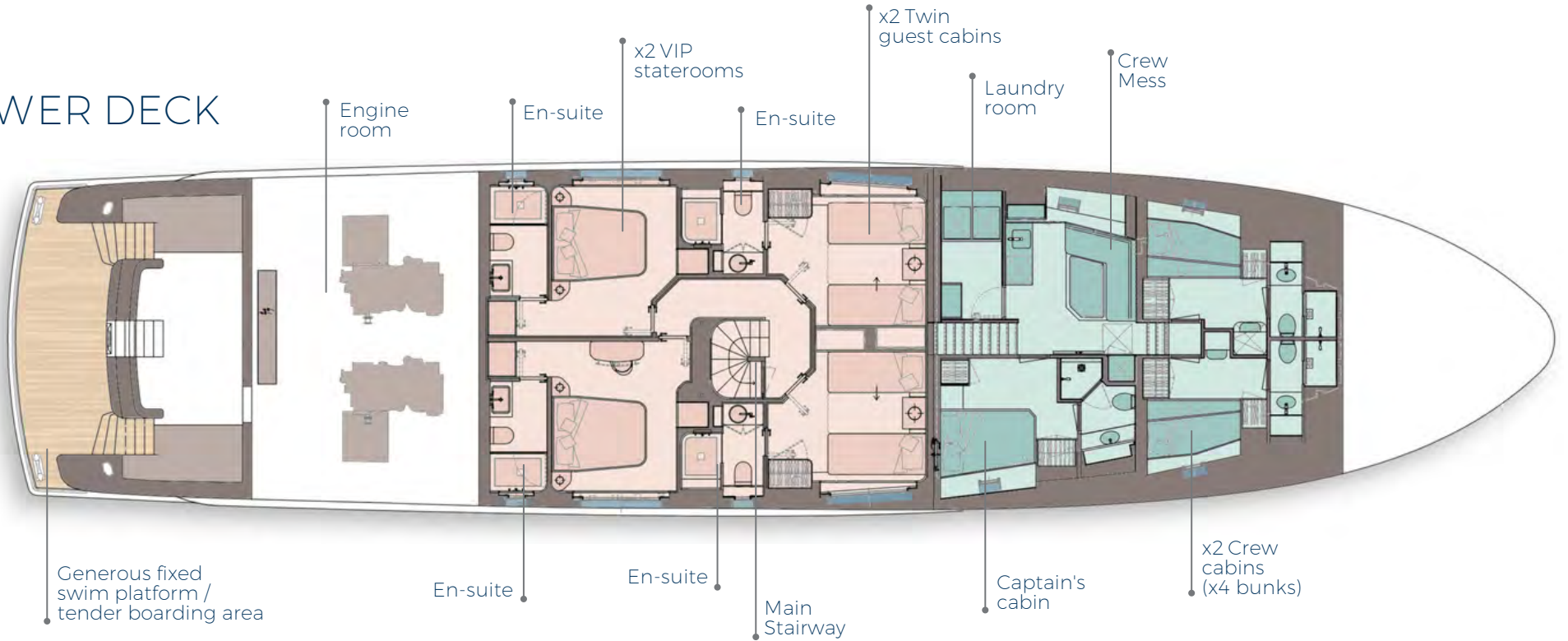




## MAIN DECK



## LOWER DECK









# YN202 - 34M MOONEN 110

*At a Glance*

## MAIN DIMENSIONS

Length overall:	34.04 metres	(111.68 ft)
Length waterline:	31.17 metres	(102.26 ft)
Beam overall:	7.50 metres	(24.60 ft)
Max Draft:	2.00 metres	(6.56 ft)
Gross Tonnage:	256 GT	

## LAYOUT

Guests:	10
Crew:	5

## CONSTRUCTION & DESIGN

Hull Material:	Steel Grade A
Superstructure Material:	Aluminium
Hull shape:	Displacement
Class:	Bureau Veritas and MCA
Exterior Design:	René van der Velden Yacht Design
Naval Architecture:	Diana Yacht Design
Interior Design:	Studio Indigo Ltd

## ENTERTAINMENT

Main salon:	65" TV and 5.1 surround sound
Master stateroom:	55" TV and 5.1 surround sound
Guest cabins:	2.0 stereo sound
Owner seating main deck fwd:	2.0 stereo sound
Bridge deck aft:	2.0 stereo sound
Bridge deck fwd:	2.0 stereo sound

## FIVE LUXURIOUS GUEST CABINS FOR 10 GUESTS

- 1x Full beam master stateroom with lounge area and desk
- 2x Double VIP staterooms
- 2x Twin guest cabins which convert from twin to double beds

## LIVING & DINING AREAS

- Main salon and dining on main deck with direct access to state of the art galley
- Open air sun deck with semi covered lounge seating, arm chairs and sun loungers
- Day bed on bridge deck fore with stairs leading down to casual seating on the main deck, overlooking the bow

*Everything you need..  
..under one roof*





# YN202 - 34M MOONEN 110

*At a Glance*

## FUEL CAPACITY

27.600 litres / 7.300 US gallon

## FUEL CONSUMPTION

Economical Speed (9 kn): 62L /hr  
 Cruising Speed (10 kn): 92L /hr  
 Max Speed (13 kn): 228L /hr

*\*including generator power for hotel load*

## MAIN ENGINE RATING

A - Rating

## ENGINES / SPEED

Diesel Engines: 2x Caterpillar C18 ACERT  
 Power Rating: A-rating 447 bkW per engine  
 Maximum Speed: 13 knots  
 Cruising Speed: 10 knots  
 Range: 3,500 nautical miles at 9 knots (economical speed)

## SOUND LEVELS

	<i>At anchor:</i>	<i>Cruising:</i>
Main deck salon:	39 db	53 db
Master stateroom:	37 db	46 db
Wheelhouse:	42 db	48 db
Guest staterooms:	40 db	54 db
Crew mess:	37 db	47 db

## AIR CONDITIONING SYSTEM

- Automatic humidity control
- Ducted fresh air make-up
- Low speed, low noise and evenly distributed in each room

*The Gentlemen's Yacht*

