



M/Y R. PAOLUCCI



ASKING PRICE: EUR 3 000 000

TAX STATUS: VAT Paid

Any yachts offered are subject to availability.
Particulars are believed correct but are not guaranteed, neither may they be used for contractual purposes.
All business is conducted in accordance with our Terms of Business - copy available on request.

IYBA
INTERNATIONAL YACHT
BROKERS ASSOCIATION
FORMERLY FLORIDA YACHT BROKERS ASSOCIATION



MYBA



LYBra



APSA

Asia-Pacific
Superyacht Association

MONACO
+377 9770 5200

FORT LAUDERDALE
+1 954 271 5165

LONDON
+44 203 795 2690

TOKYO
+81 3 6447 7154

info@yacht-zoo.com | www.yacht-zoo.com



| | |
|---------------------------|-------------------------------------------|
| TYPE: | M/Y |
| FLAG: | Italy |
| SHIPYARD: | Picchiotti |
| EXTERIOR DESIGNER: | Picchiotti |
| INTERIOR DESIGNER: | Cantieri del Tevere |
| BUILD: | 1970 |
| REFIT: | 2018 |
| LENGTH OVERALL: | 29.76 m / 97.64 ft |
| BEAM: | 7.5 m / 24.61 ft |
| DRAFT: | 3.21 m / 10.53 ft |
| DISPLACEMENT: | 90 t |
| GROSS TONNAGE: | 152 |
| HULL MATERIAL: | Wood. Cold Moulded Ply/Mahogany Frames |
| SUPERSTRUCTURE: | Wood |
| CLASS: | RINA |
| ENGINES: | 2 x MAN D2862 V12, 1800hp each (new 2018) |
| MAX SPEED: | 27 kt |
| CRUISE SPEED: | 14 kt |
| RANGE: | 375 nm |
| ACCOMMODATION: | 10 guests in 5 staterooms, 5 crew |



HISTORY

30m PAOLUCCI was built in 1970 by the historic Picchiotti shipyard in Viareggio. Constructed at the time for the Italian Navy, she entered service on 12 September 1970 as a military ship and fast ambulance in rescue operations at sea. She was named R. PAOLUCCI after Raffaele Paolucci, an Italian doctor, soldier and politician, who fought both World Wars and was decorated as a war hero by Italy, France, England, Poland and the United States of America. From 1976 until 2006 she was used for the Presidency of the Italian Republic for important meetings, parties and special events.

Giordano Fabiani, fascinated by the history and origins of PAOLUCCI, decided to purchase the yacht in June 2006 and carry out a meticulous restoration project whilst managing to preserve the elegance of the original boat.

The renovation project began in the summer of 2006, inside the Tiber Shipyard in Fiumicino by the company ETA, which specializes in the restoration of classic yachts. PAOLUCCI, after a careful design study aimed at the conservation of the original materials, was restored in structural parts of the hull, superstructures and deck. On the other hand, the engine room, the on-board systems (electrical, hydraulic, air conditioning), the rooms dedicated to the crew and all the electronic and navigation instruments were completely redesigned and renovated.

The redesign of the interior, was entrusted to the company of Castagna di Erba, who managed to combine craftsmanship in the workmanship with an elegant and refined modern style in the choice of materials and colors used. White wood paneling covers the interior walls of PAOLUCCI entirely, favoring a natural brightness. The floors and all the furnishings are made of opaque Burma teak.

The large saloon and dining room dominate the main deck and are characterized by essential furnishings that are chosen for both design and functionality. The subdivision of the Owner's and guests' area has remained unchanged. In addition to the Owner's cabin, PAOLUCCI can receive up to 10 guests in 3 double VIP cabins and a guest cabin with 2 single beds. All cabins are equipped with en-suite bathrooms, air conditioning and B&O audio video system.

Great attention to detail was paid to the spaces for outdoor living: two sundecks, one at the bow and one on the 80 square meter flybridge, furnished with custom sofas and deck cushions, positioned to enjoy the sea for total relaxation. The helm station, above the first deck, is covered with dark wood and leather paneling, whilst on the upper deck there is an outdoor command post.

Giordano Fabiani states that "It was an exciting challenge, the transformation involved, the renewal of the interiors and an important restoration of the structural part of the yacht, but the most difficult task was to maintain the unrepeatability of the original elegance with the addition of modern technical and architectural details. I am satisfied to have restored the ancient splendor of PAOLUCCI and to have transformed it into a luxury yacht".



MECHANICAL, PROPULSION AND ENGINE ROOM EQUIPMENT

Main engines: 2 x MAN D2862 V12, 1800 hp each
Engine hours: 500
Gear Boxes: 2 x ZF 3050
Exhaust system: 2
Speeds & fuel consumptions: at 14 knots 270 liters in total
Range(s): from 252 to 1310
Propeller system: 2
Steering system: 2
Rudder Angle indicator: 1
Bow / stern thruster(s): both
Fuel filters: 4
Oil/Water separator 4
Fire/Bilge pump: 1 220v 1 12v
Boilers: 2
WC system: 1
Air-conditioning: 1 condaria
Water makers: 1 300 capacity 300 l/h
Hot water

CAPACITIES

Fuel: 7,500 Litres
Water: 8,000 Litres
Lube oil: 400 Litres
Black water: 400 lts
Bilge water: 400 lts

ELECTRICAL

Generators: 2 x Kohler 32Kw. - 750 hours (April 2021)
Electricity: 220v
Shore Power: 380v
Converters: 1
Batteries: 6 of 602a (engines), 6 of 602a (services), 2 680a (gen.)
Battery chargers: 6



COMMUNICATIONS AND NAVIGATIONAL EQUIPMENT

Cellular system: 1
VHF radiotelephones: 2
SSB radiotelephones: 1
Displays: 5
Magnetic compass: 1
Gyro compass: 1
Automatic pilot: 1
Log: 1
Echo sounder: 1
Radar: 2
GPS: 2
AIS: 1
GMDSS: 4
Wind instruments: 1
Ship's bell: 1

GALLEY, DOMESTIC AND LAUNDRY EQUIPMENT

Induction burners
Oven: 1
Microwave; 1
Refrigerators: 5
Freezers: 2
Ice maker: 1
Coffee machine: 2
Dishwasher: 1
Washing machine: 1
Tumble dryer: 1
Steam iron: 1
Pantry Equipment wide range of accessories
Upper Deck Equipment frigobar, ice maker and a sink
Crew Mess Equipment frigobar, microwave and a sink

ENTERTAINMENT EQUIPMENT

TVs, speakers, amplifiers, sat system, telephone and controls systems etc
Main Saloon: tv, cd player, 5 speakers and subwoofer Bang & Olufsen, sat system and controls
Skylounge: 4 speakers
Master stateroom: tv, cd player, radio and speakers Bang & Olufsen
Guests staterooms: tv Samsung cd player and radio Bang & Olufsen

MONACO
+377 9770 5200

FORT LAUDERDALE
+1 954 271 5165

LONDON
+44 203 795 2690

TOKYO
+81 3 6447 7154



Aft deck: speakers
Crew mess: tv and speakers

OFFICE EQUIPMENT*

Computer: Apple
Printer: Epson
Fax: Epson
Ship's safes:

DECK EQUIPMENT

Anchor windlass: 2 Maxwell 4500
Aft warping capstans: 2 Maxwell 1500
Anchor chains : 2 x 75 mt each
Boat crane & davits: 2 x Sanguinetti, 600kg capacity at 9m
Passerelle: hydraulic system max 150 kg
Swim ladder: 1 in stainless still with wooden steps
Searchlights: 1
Underwater lights: 4

SAFETY AND SECURITY EQUIPMENT

Life rafts: 2 CSM 10 people each
Life jackets: 26
Lifebuoys: 2
EPIRB: 1
SART: 1
Fire fighting system: 1
Extinguishers: 15 foam, 3 co2
Alarm system: 2
CCTV: 5
Medical: 3 boxes

TENDERS AND TOYS

Tender, engines and hp: 1 x Inflatable tender Avon, 4.20m
Jet skis: 1 Powerjet Seadoo rat 260 rs
Watersports equipment: 2 Seabob f5s, 2 towable (round and banana, 3 places each), 1 inflatable dinghy, 1 stand up paddle



Diving equipment: fins and masks

OTHERS

REFIT HISTORY

1 big refit in 2006, another one in 2018 including:

New engines propellers and axes

Generators and instruments,

Complete varnish of the boat

This document is not contractual. All specifications are given in good faith and offered for informational purposes only. YACHTZOO does not warrant or assume any legal liability for the accuracy, completeness or usefulness of any information displayed. Yacht availability, inventory, specifications and prices are subject to change without prior notice.

Any reproduction of the contents of this document for advertising in any medium in part or in its entirety is strictly forbidden without YACHTZOO's prior written consent.

MONACO
+377 9770 5200

FORT LAUDERDALE
+1 954 271 5165

LONDON
+44 203 795 2690

TOKYO
+81 3 6447 7154



MONACO
+377 9770 5200

FORT LAUDERDALE
+1 954 271 5165

LONDON
+44 203 795 2690

TOKYO
+81 3 6447 7154

info@yacht-zoo.com | www.yacht-zoo.com



MONACO
+377 9770 5200

FORT LAUDERDALE
+1 954 271 5165

LONDON
+44 203 795 2690

TOKYO
+81 3 6447 7154

info@yacht-zoo.com | www.yacht-zoo.com



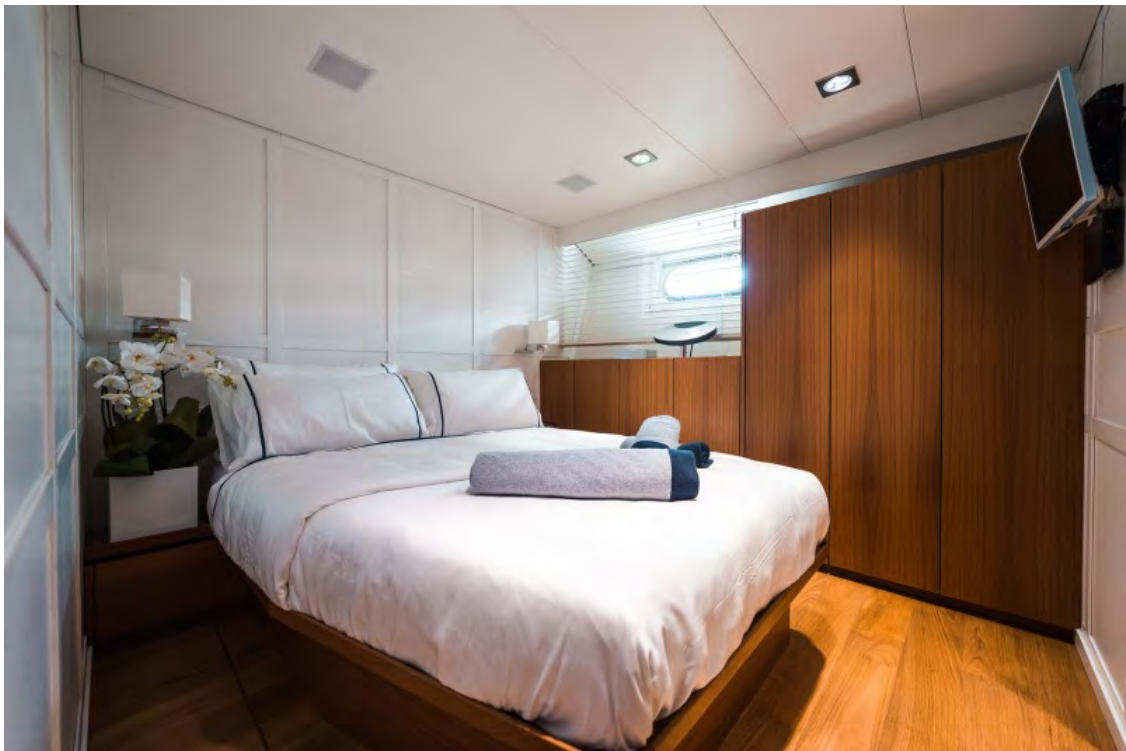
MONACO
+377 9770 5200

FORT LAUDERDALE
+1 954 271 5165

LONDON
+44 203 795 2690

TOKYO
+81 3 6447 7154

info@yacht-zoo.com | www.yacht-zoo.com



MONACO
+377 9770 5200

FORT LAUDERDALE
+1 954 271 5165

LONDON
+44 203 795 2690

TOKYO
+81 3 6447 7154

info@yacht-zoo.com | www.yacht-zoo.com



MONACO
+377 9770 5200

FORT LAUDERDALE
+1 954 271 5165

LONDON
+44 203 795 2690

TOKYO
+81 3 6447 7154

info@yacht-zoo.com | www.yacht-zoo.com



MONACO
+377 9770 5200

FORT LAUDERDALE
+1 954 271 5165

LONDON
+44 203 795 2690

TOKYO
+81 3 6447 7154

info@yacht-zoo.com | www.yacht-zoo.com



MONACO
+377 9770 5200

FORT LAUDERDALE
+1 954 271 5165

LONDON
+44 203 795 2690

TOKYO
+81 3 6447 7154

info@yacht-zoo.com | www.yacht-zoo.com



MONACO
+377 9770 5200

FORT LAUDERDALE
+1 954 271 5165

LONDON
+44 203 795 2690

TOKYO
+81 3 6447 7154

info@yacht-zoo.com | www.yacht-zoo.com



MONACO
+377 9770 5200

FORT LAUDERDALE
+1 954 271 5165

LONDON
+44 203 795 2690

TOKYO
+81 3 6447 7154

info@yacht-zoo.com | www.yacht-zoo.com



MONACO
+377 9770 5200

FORT LAUDERDALE
+1 954 271 5165

LONDON
+44 203 795 2690

TOKYO
+81 3 6447 7154

info@yacht-zoo.com | www.yacht-zoo.com



MONACO
+377 9770 5200

FORT LAUDERDALE
+1 954 271 5165

LONDON
+44 203 795 2690

TOKYO
+81 3 6447 7154

info@yacht-zoo.com | www.yacht-zoo.com



MONACO
+377 9770 5200

FORT LAUDERDALE
+1 954 271 5165

LONDON
+44 203 795 2690

TOKYO
+81 3 6447 7154

info@yacht-zoo.com | www.yacht-zoo.com



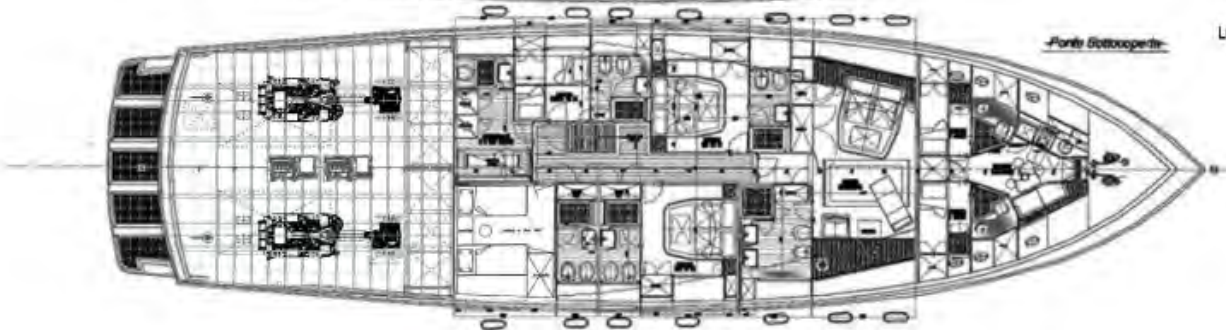
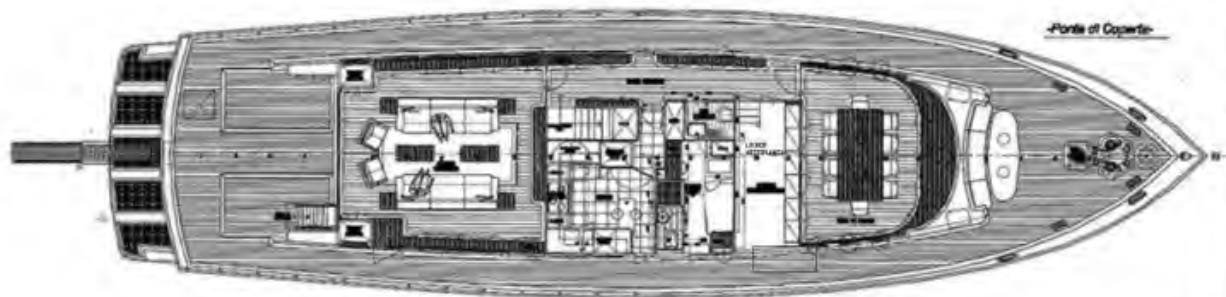
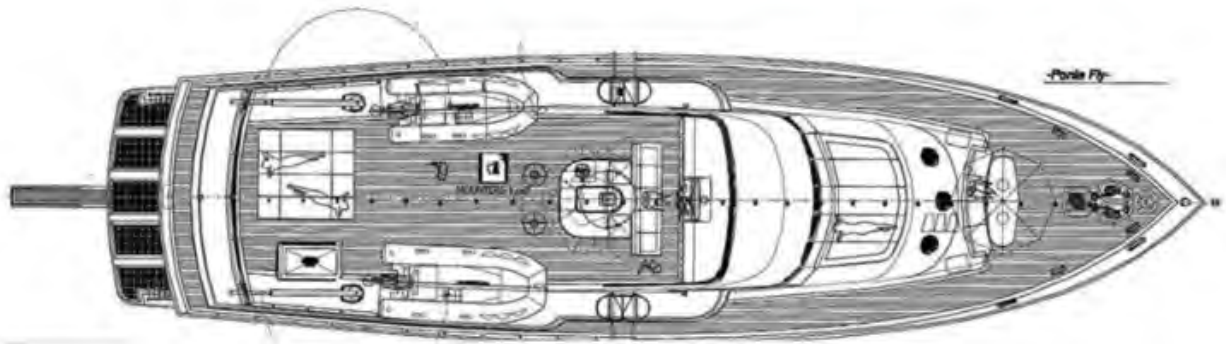
MONACO
+377 9770 5200

FORT LAUDERDALE
+1 954 271 5165

LONDON
+44 203 795 2690

TOKYO
+81 3 6447 7154

info@yacht-zoo.com | www.yacht-zoo.com



LOCALE TIMONERIA

MONACO
+377 9770 5200

FORT LAUDERDALE
+1 954 271 5165

LONDON
+44 203 795 2690

TOKYO
+81 3 6447 7154